



GSM Cell-Phone Monitoring & Control System



The Sealite Advantage

- Monitor lantern status using any cell-phone or Sealite's secure website user-portal login
- Reports pre-programmed alarm conditions to designated cell-phone numbers and email addresses
- Remote control of lantern settings
- Lantern responds only to authorised users
- Internally integrated system available with a range of Sealite lanterns to maintain IP68 waterproof rating
- Trend analysis of historical data enables proactive maintenance scheduling
- Low cost monitoring



Sealite's cost effective GSM Monitoring & Control System provides an array of options for your lantern including remote control over flash code and intensity settings, and other features for GSM-enabled lanterns.

Data is able to be communicated from the lantern including lantern statistics, battery condition and GPS positioning via your cell-phone, email address or Sealite's secure web portal.

Maintenance personnel are able to send an SMS message to the designated Sealite GSM lantern cell-phone number and then receive an automatic SMS reply detailing the various pre-set operational conditions. In addition, various alarm conditions can also be activated such as tracking a drifting buoy via GPS that has moved outside a designated area (if mooring is broken etc) or alerting to a potential power disruption.

Sealite's innovative GSM Monitoring & Control System may also be setup to regularly report lantern conditions to a secure user-login portal area of the Sealite website. This provides details of the GSM lantern's operational status in an easy-to-read PC interface, such as historical graphed data, GPS positioning viewed via internet mapping systems and day-to-day operational information about each individual lantern over the period of its service life. Users can also have alarms and reports sent to designated email addresses.

Each lantern is fitted with its own SIM card which provides a designated cell-phone contact number for each individual lantern. Any network operator can be used providing they have GSM coverage.

Monitoring Conditions

- Battery voltage
- Solar module charging current
- Lantern current draw
- Lantern position - Latitude and Longitude (including 'off-station' facility)
- Day/night on status
- Current flash code setting
- Operation mode

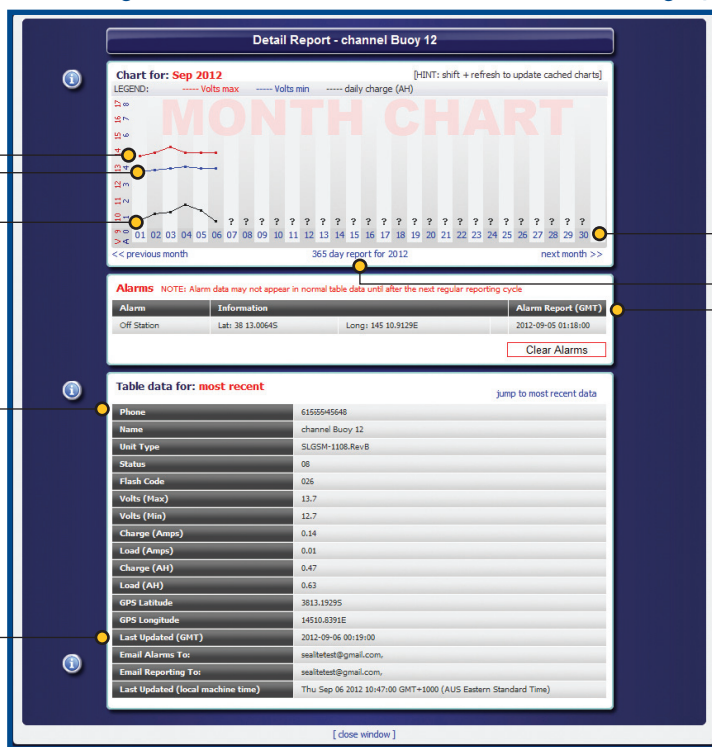
Control Features

- Flash setting
- Intensity setting
- Operation mode





Monitor GSM light installations via Sealite's secure website user-login portal



Shows maximum battery voltage over the last 24 hour period

Shows minimum battery voltage over the last 24 hour period

Shows total amount of solar charge added back into the battery system over the last 24 hour period (dependent on local weather conditions)

SIM card cell-phone number (international format eg. +61488002682)

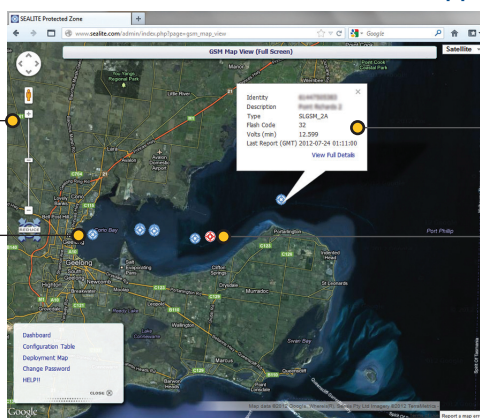
Other table data shows operational condition of individual GSM lanterns

Click on a specific date to view the operational data for that day in the table below

View graphed data as a yearly chart (365 day report) or monthly chart

View details of alarms that have been triggered

GPS positioning of GSM/GPS lantern viewed via internet mapping system



Use navigation tools to zoom in/out of internet map

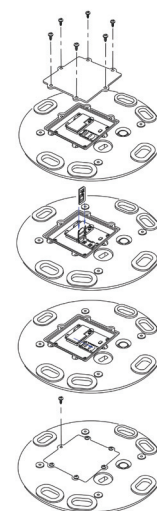
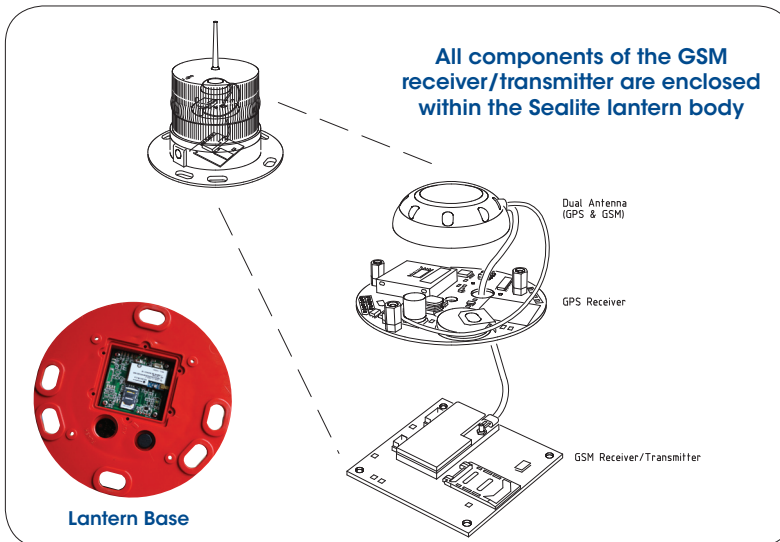
Sealite logo indicates the GPS positioning of Sealite GSM/GPS lantern

Click on the Sealite logo to view summary data for that lantern

Lanterns are highlighted in red when an alarm is triggered

'Off-Station' Alarm Condition

If the AtoN moves off-station, the operator can continue to track the location of the unit for safe recovery (providing the system remains in or returns to an area with GSM coverage).



Individual SIM cards are easily installed within the base of the GSM lantern

