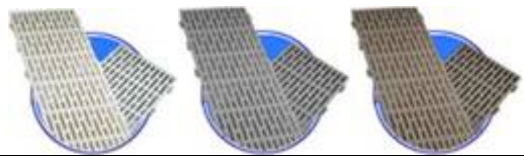


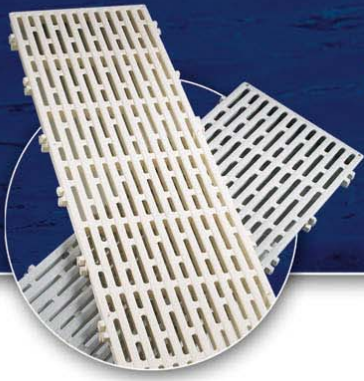


# THRUFLOW™

Interlocking Panels

## Quick Reference Specifications Chart

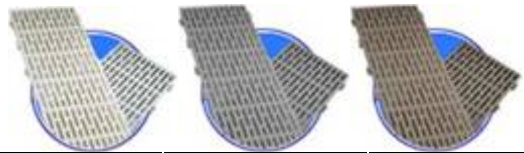
		ThruFlow™ 36"	ThruFlow™ 48"	ThruFlow™ 60"
<b>Colors Available</b>		Cream, Light Grey, Maple 		
<b>Base Material</b>		Fibre-Glass Reinforced Polypropylene	Fibre-Glass Reinforced Polypropylene	Fibre-Glass Reinforced Polypropylene
<b>Size</b>	(inch) (LxWxH) (mm) (LxWxH)	12 x 36 x 1.2 305 x 914 x 30	12 x 48 x 1.2 305 x 1219 x 30	12 x 60 x 1.2 305 x 1524 x 30
<b>Support Span</b>	(inch) (mm)	18 457	16 406	15 381
<b>Weight</b>	(lb) (Kg)	4.2 1.905	5.4 2.449	7.0 3.175
<b>Load Rating</b>	(psf) (kPa)	100 4.8	135 6.5	170 8.1
<b>Load at L/180</b>	( lbf ) ASTM D7032 ( kN )	239 1.06	289 1.29	340 1.51
<b>Load at Rupture</b>	( lbf ) ASTM D6109 ( kN )	1,879 8.4	2,141 9.5	2,649 11.8
<b>Modulus of Rupture</b>	(psi) ASTM D6109 ( MPa )	7,830 53.99	7,920 54.61	9,190 63.36
<b>Modulus of Elasticity</b>	( psi ) ASTM D6109 ( Mpa )	437,000 3,013	486,000 3,351	426,000 2,937
<b>Concentrated Load</b>	( lbf ) ASTM E661 ( kN )	1,529 6.80	1,447 6.44	1,872 8.33
<b>Uniformly Distributed Load</b>	( psf ) Australian Standard AS3962:2001 ( kPa)		157 7.50	
<b>Concentrated Point Load</b>	( lbf ) Australian Standard AS/NZS 1170.1: 2002 ( kN )		473 2.10	



# THRUFLOW™

Interlocking Panels

## Quick Reference Specifications Chart

		ThruFlow™ 36"	ThruFlow™ 48"	ThruFlow™ 60"
<b>Colors Available</b>		Cream, Light Grey, Maple 		
<b>Creep Relaxation</b> ASTM D7032	(psf Load @ 24 hrs) (kPa Load @ 24 hrs) % Recovery	200 9.6 92.7%	200 9.6 92.7%	200 9.6 92.7%
<b>Notched Izod Impact</b> ASTM D256 Ambient 23°C (73°F)	( ft-lb/in ) ( J/m )	2.62 140		
<b>Notched Izod Impact</b> ASTM D256 Cold -30°C (-22°F)	( ft-lb/in ) ( J/m )	1.23 66		
<b>Coefficient of Friction</b> ASTM D2394	static kinetic	0.78 0.76		
<b>Wet Pendulum Slip Resistance</b> Australian Standard AS/NZS 4586:2004		46 - Classification W		
<b>Wet Pendulum Slip Resistance</b> AS/NZS 4586:2004		80 - Classification V		
<b>Oil Ramp</b> AS/NZS 4586:2004		18.1 degrees - Classification R10		
<b>Wet Barefoot Ramp</b> AS/NZS 4586:2004		29 degrees - Classification C		
<b>Coefficient of Linear Thermal Expansion</b> ASTM D696		1.40×10 <sup>-5</sup> 1°F 2.52×10 <sup>-5</sup> 1°C		
<b>Light Penetration</b>		<b>Allows Light to Penetrate Walking Surface</b>		
<b>U/V Light Properties</b>		U/V Stabilized by Additive		
<b>Anti-Static Properties</b>		Migrating Semi-Permanent Anti-Static Additive		
<b>Residential Warranty</b>		12 Years		